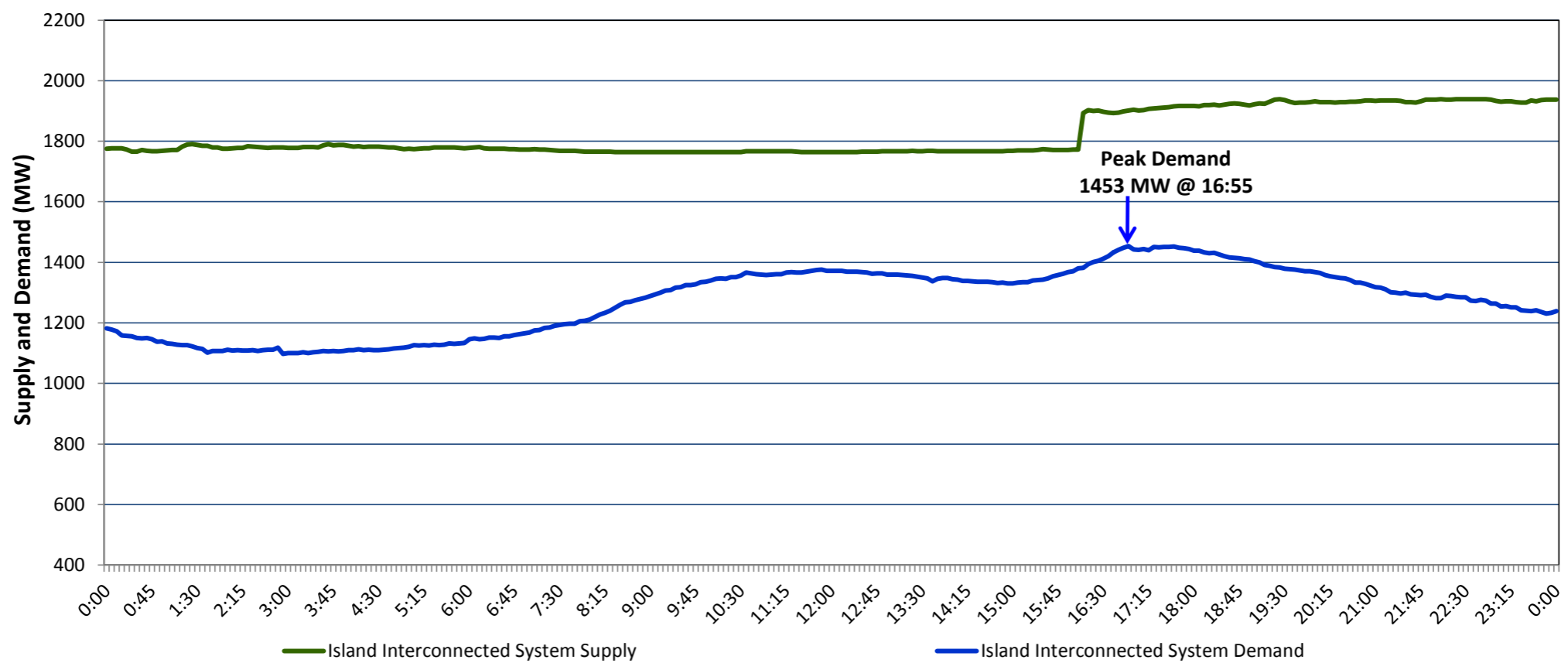


**Newfoundland Labrador Hydro (NLH)  
Supply and Demand Status Report Filed Tuesday, January 02, 2018**

**Section 1  
Island Interconnected System Supply and Demand  
Actual 24 Hour System Performance For Sunday, December 31, 2017**



**Supply Notes For December 31, 2017**

- <sup>1,2</sup>
- A As of 1610 hours, December 19, 2017, Holyrood Unit 2 available at 160 MW (170 MW).
  - B As of 1052 hours, December 28, 2017, Stephenville Gas Turbine available at 25 (50 MW).
  - C As of 1652 hours, December 29, 2017, Hardwoods Gas Turbine available at 25 MW (50 MW).
  - D As of 2319 hours, December 29, 2017, Holyrood Unit 1 available at 150 MW (170 MW).
  - E **At 1609 hours, December 31, 2017, Holyrood Unit 3 available at 130 MW (150 MW).**

**Section 2  
Island Interconnected Supply and Demand**

| Mon, Jan 01, 2018                            | Island System Outlook <sup>3</sup> | Seven-Day Forecast          | Temperature (°C) |         | Island System Daily Peak Demand (MW) |                       |
|--|------------------------------------|-----------------------------|------------------|---------|--------------------------------------|-----------------------|
|  |                                    |                             | Morning          | Evening | Forecast                             | Adjusted <sup>7</sup> |
| Available Island System Supply: <sup>5</sup> | <b>1,910 MW</b>                    | Monday, January 01, 2018    | -4               | -3      | <b>1,530</b>                         | <b>1,421</b>          |
| NLH Generation: <sup>4</sup>                 | 1,595 MW                           | Tuesday, January 02, 2018   | -3               | -5      | 1,540                                | 1,431                 |
| NLH Power Purchases: <sup>6</sup>            | 125 MW                             | Wednesday, January 03, 2018 | -6               | -6      | 1,525                                | 1,416                 |
| Other Island Generation:                     | 190 MW                             | Thursday, January 04, 2018  | -9               | -1      | 1,550                                | 1,441                 |
| Current St. John's Temperature:              | -7 °C                              | Friday, January 05, 2018    | 6                | 2       | 1,320                                | 1,214                 |
| Current St. John's Windchill:                | -14 °C                             | Saturday, January 06, 2018  | -1               | -3      | 1,485                                | 1,377                 |
| 7-Day Island Peak Demand Forecast:           | <b>1,550 MW</b>                    | Sunday, January 07, 2018    | -7               | -5      | 1,505                                | 1,396                 |

**Supply Notes For January 01, 2018**

- <sup>3</sup>
- Notes:
1. Generation outages for running and corrective maintenance are included. These are not unusual for power system operations. They generally do not impact customer supply. The power system operators schedule outages to system equipment whenever possible to coincide with periods when customer demands are low and sufficient supply reserves are available. However, from time to time equipment outages are necessary and reserves may be impacted.
  2. Due to the Island Interconnected System being isolated from the larger North American grid, when there is a sudden loss of large generating units some customer's load must be interrupted for short periods to bring generation output equal to customer demand. This automatic action of power system protection, referred to as under frequency load shedding, is necessary to ensure the integrity and reliability of system equipment. Under frequency events typically occur 5 to 8 times per year on the Island Interconnected System and the resultant customer load interruptions are generally less than 30 minutes.
  3. As of 0800 Hours.
  4. Gross output including station service at Holyrood (24.5 MW) and improved NLH hydraulic output due to water levels (35 MW).
  5. Gross output from all Island sources (including Note 4).
  6. NLH Power Purchases include: CBPP Co-Gen, Nalcor Exploits, Rattle Brook, Star Lake, Wind Generation, Vale capacity assistance and Maritime Link Import (when applicable).
  7. Adjusted for CBP&P and Vale and Praxair interruptible load, the impact of voltage reduction and Maritime Link Exports (when applicable).

**Section 3  
Island Peak Demand Information  
Previous Day Actual Peak and Current Day Forecast Peak**

|                   |  |       |          |
|-------------------|--|-------|----------|
| Sun, Dec 31, 2017 | Actual Island Peak Demand <sup>8</sup> | 16:55 | 1,453 MW |
| Mon, Jan 01, 2018 | Forecast Island Peak Demand            |       | 1,530 MW |

- Notes: <sup>8</sup> Island Demand is supplied by NLH generation and purchases, plus generation owned and operated by Newfoundland Power and Corner Brook Pulp & Paper (Deer Lake Power, DLP).